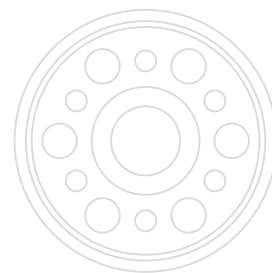


TOSHIBA



STORAGE SOLUTIONS
HARD DISK DRIVES
FOR PROFESSIONAL &
PERSONAL USE





Contents

External HDDs – Categories	4 – 5
External HDDs – Product pages	6 – 8
Technical Data – External HDDs	9
Technical features	10 – 11
Internal HDDs – Categories	12 – 13
Internal HDDs – Product pages	14 – 16
Technical data – Internal HDDs	17
Enterprise HDDs – Product pages	18 – 19
Technical data – Enterprise HDDs	20 – 23



The right hard disk drive for every mission

No storage requirement is the same. On our journeys, we generate an increased amount of data, day in, day out.

Be it for private or professional use, server-based storage, video surveillance, gaming or stylish mobile solutions, Toshiba delivers the right hard disk drives for a variety of storage needs.

Toshiba’s external storage product range is categorized into different classes - Standard, Advanced, Premium and Specialty - addressing the individual storage requirements of users and helping them to find the perfect fit for their storage needs, whether it’s a solution for simple plug-and-play operation, gaming or cross-platform use for Mac, Windows PC and tablets.

Toshiba’s internal HDDs are divided into application areas for private and professional use, including NAS, surveillance and high-performance drives. Additionally, the extensive line-up of Enterprise storage solutions meet highest requirements to support business- and mission-critical applications.

For over 50 years Toshiba has been developing and delivering high-quality hard disk drives to the market. View the current portfolio on the following pages and find your perfect storage solution.

Everything is possible – with the right partner and hard disk drive.



Portable Storage

Storage is one of the most vital components of our ever-expanding digital lifestyles. In order to suit various demands, Toshiba offers a custom-designed range of external storage products to simplify your everyday life. Whether you are looking for a hard drive with auto-backup software for your laptop or PC, or a safe place for your blogging content – with Toshiba you will find the right solution.

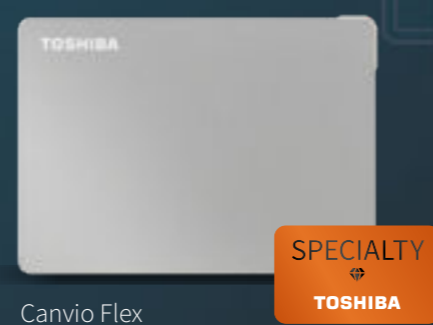
Our external storage product line-up is categorized according to performance criteria and features. With clear colour codings and shopping guides, customers immediately know which products best meet their requirements.



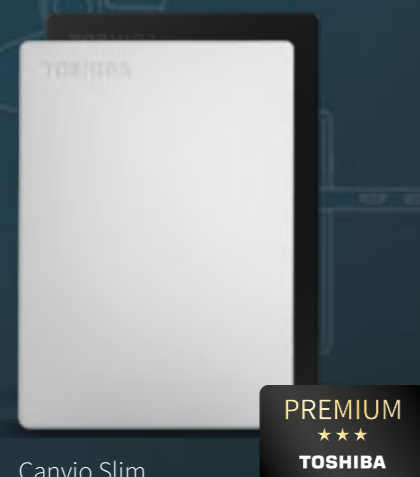
Watch video



Canvio Gaming



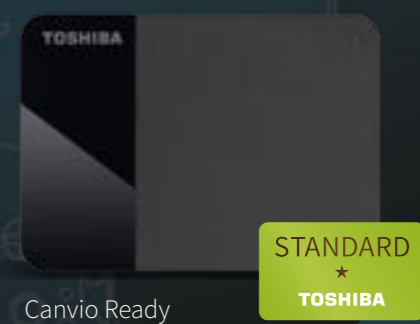
Canvio Flex



Canvio Slim



Canvio Advance



Canvio Ready



Canvio Basics

Specialty



Hard drives with something special built in.

There are times when ordinary drives are not good enough for special storage needs. Whether it's a high-performance storage upgrade for your gaming console or a drive that is compatible with your growing stable of devices, you can be sure to find the right solution in the Canvio Gaming or the Canvio Flex. Everything is possible – with the right drive.



Premium



Make no compromises – every device should fit your style and exceed your expectations.

In the world of design, special details make the difference. That's what makes the Canvio Slim our top line of hard drives. Premium reliability and performance are packed into a slim aluminium casing that looks great. And there are extras you won't find on most hard drives, like software for added protection and a 3-year extended warranty. Everything is possible – with the right drive.

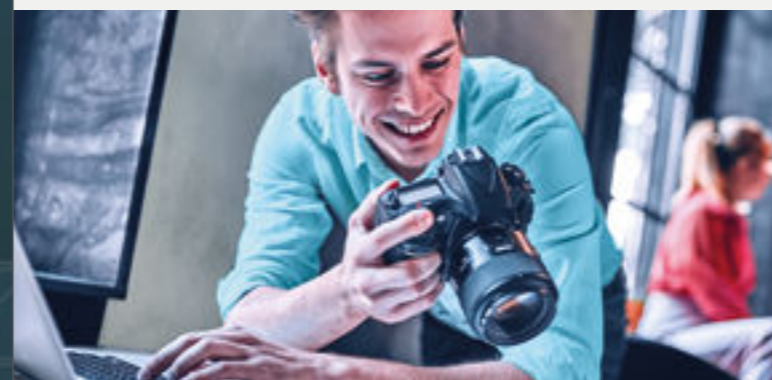


Advanced



When your journey leads you to stunning places, you need a safe place to store all the impressions.

Life is full of adventure. Every day there are memories to save and new experiences to report on. The Canvio Advance line of hard drives are your perfect companions. You get high-performance, top-quality and advanced functions in a modern design. And since security and backup software are included, you can rest assured your data is always safe. Everything is possible – with the right drive.



Standard



Save your special memories on a special hard drive.

Life flies by quickly. Before you know it, the kids are grown up and memories of the great times start to fade. Make your Toshiba Canvio Basics or Canvio Ready the treasure chest for all the special moments. It's easy to keep your memories safe and revisit them in clear detail later. Everything is possible – with the right drive.



Canvio Flex

Smart Storage. Made to Adapt.
For Mac, Windows PC and Tablets.



SPECIALTY
TOSHIBA

One Drive. Many Devices.
The Canvio Flex offers storage in its most compatible form, enabling you to seamlessly store and access your data on Mac, Windows PC and tablet devices with USB-C® ports* with a simple one-stop solution.



- 2.5" 2.5" External Hard Drive
- Elegant silver finish
- SuperSpeed USB 3.2 Gen 1 port
- USB-powered
- Includes USB Type-C® and USB Type-A cables
- Compatible with Mac / Windows PC / Tablet
- 3-year warranty

Colour

Capacities

4 TB 2 TB 1 TB



* Please check device compatibility

Canvio Gaming

Level up your Storage.



SPECIALTY
TOSHIBA

More Games. More Wins.
With the Canvio Gaming portable hard drive, you won't have to worry about deleting games to make room for the hottest new release. The sleek, lightweight design allows you to hold up to 100 games** in an easy to carry light-weight casing. Offering up to 4 TB of storage capacity for your data, your gaming library has room to grow.



- 2.5" 2.5" External Hard Drive
- Sleek black finish
- SuperSpeed USB 3.2 Gen 1 port
- USB-powered
- Works with PlayStation / Xbox / PC
- Store up to 25+ games per TB**

Colour

Capacities

4 TB 2 TB 1 TB



** Average game size: 36 GB

Canvio Slim

All of the Room. None of the Weight.



Stylish and elegant companion.
Up to 2 TB stored in a super slim and lightweight aluminium design, make this drive a stylish and elegant companion for any device, whether it is on your desk or on the move. With several useful features and a three-year product warranty, the Canvio Slim keeps your data well protected. Available in two different colours: silver or black, the Canvio Slim always suits the occasion.



- 2.5" 2.5" External Hard Drive
- Aluminium finish
- SuperSpeed USB 3.2 Gen 1 port
- USB-powered
- Auto-backup software
- Password protection software
- 3-year warranty

Colours

Capacities

2 TB 1 TB



View more

Canvio Advance

Secured in Style. Take Life Anywhere.



ADVANCED
TOSHIBA

Modern design.
The Canvio Advance features a stylish, textured design in four trendy colours. You can choose from black, light beige, red and green based on your preference for up to 4 TB of mobile storage in the plam of your hand.



- 2.5" 2.5" External Hard Drive
- Textured finish
- SuperSpeed USB 3.2 Gen 1 port
- USB-powered
- Auto-backup software
- Password protection software

Colours

Capacities

4 TB 2 TB 1 TB



View more

Canvio Basics

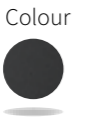
Storage Made Simple.



STANDARD
★
TOSHIBA

Your compact companion.
High capacity storage in a conveniently compact, matt black casing. Available in several capacity sizes up to 4 TB, Canvio Basics hard drives are perfect for storing data, music, movies, and pictures.

- 2.5" 2.5" External Hard Drive
- Matt finish
- SuperSpeed USB 3.2 Gen 1 port
- USB-powered
- Plug-and-play operation



Capacities
4 TB 2 TB 1 TB



View more

Canvio Ready

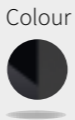
Ready to Store. Simple to Use.



STANDARD
★
TOSHIBA

A place for all your files.
The Canvio Ready is available in a range of different storage sizes up to 4 TB. So whatever your portable storage requirements, whether you're saving documents, photos, movies, or a combination, Canvio Ready provides the ideal, high-capacity solution in its distinctive two-tone matte and gloss black finish.

- 2.5" 2.5" External Hard Drive
- Two-tone matte and gloss finish
- SuperSpeed USB 3.2 Gen 1 port
- USB-powered
- Drag-and-drop use





















Capacities
4 TB 2 TB 1 TB



View more

Technical data

Model	Category	Casing	Part Number	Capacity	Interface	USB Connector Type	PC	Mac	Other Compatibility	Backup Software	Password Protection						
Canvio Flex																	
		Elegant silver finish	HDTX140ESCCA	4 TB	USB 3.2 Gen 1	Type-C® & Type-A	✓	✓	 iOS / Android™ devices ²	-	-						
			HDTX120ESCAA	2 TB													
			HDTX110ESCAA	1 TB													
Canvio Gaming																	
		Sleek black finish	HDTX140EK3CA	4 TB	USB 3.2 Gen 1	Type-A	✓	✓	 PlayStation / Xbox ²	-	-						
			HDTX120EK3AA	2 TB													
			HDTX110EK3AA	1 TB													
Canvio Slim																	
 		Aluminium finish	HDTD320EK3EA	2 TB	USB 3.2 Gen 1	Type-A	✓	✓ ¹	-	✓	✓						
			HDTD310EK3DA	1 TB													
			HDTD320ES3EA	2 TB													
			HDTD310ES3DA	1 TB													
Canvio Advance																	
   		Textured finish	HDTCA40EK3CA	4 TB	USB 3.2 Gen 1	Type-A	✓	✓ ¹	-	✓	✓						
			HDTCA20EK3AA	2 TB													
			HDTCA10EK3AA	1 TB													
		Textured finish	HDTCA40ER3CA	4 TB								HDTCA10ER3AA	1 TB				
			HDTCA20ER3AA	2 TB													
			HDTCA40EW3CA	4 TB													
		Textured finish	HDTCA20EW3AA	2 TB								HDTCA10EW3AA	1 TB				
			HDTCA40EG3CA	4 TB													
			HDTCA20EG3AA	2 TB													
		Textured finish	HDTCA10EG3AA	1 TB													
		Canvio Basics															
		Matt	HDTB540EK3CA	4 TB	USB 3.2 Gen 1	Type-A	✓	✓ ¹	-	-	-						
			HDTB520EK3AA	2 TB													
			HDTB510EK3AA	1 TB													
Canvio Ready																	
		Two-toned matte and gloss finish	HDP340EK3CA	4 TB	USB 3.2 Gen 1	Type-A	✓	✓ ¹	-	-	-						
			HDP320EK3AA	2 TB													
			HDP310EK3AA	1 TB													

USB Type-C® and USB-C® are registered trademarks of USB Implementers Forum. Android is a trademark of Google LLC. Mac and macOS are trademarks of Apple Inc. Microsoft, Windows and Xbox are trademarks of the Microsoft group of companies. „PlayStation“ is a registered trademark or a trademark of Sony Interactive Entertainment Inc. Canvio Gaming: Estimated game storage is based on assumption of average game size of 36 GB for current generation games. The number of games actually stored may vary depending on file size, formatting, console software, and other programs or factors. Original discs may be required to verify ownership for games purchased and loaded from disc. Internet connection and original game owner's account may be required.

¹ Requires reformatting for macOS.
² Please check compatibility list.

Quality in every detail

Best materials, highly rated hard drive disks and fast controllers:
That is what Toshiba external storage is made of.



Micro-B USB 3.2 Gen 1
HDD interface connector

Hard Drives

Toshiba quality 2.5" hard drive disks with up to 4 TB capacity

Controller

Fast USB 3.2 onboard controller as part of the HDDs circuit board layout



Software

Password Protection

Stop unauthorised users from accessing your private information with the included Toshiba Storage Security Software, allowing you to secure your hard drive with a unique password.



Backup Software

The included Toshiba Storage Backup Software comes with an intuitive and user-friendly interface, making the backup of your data a breeze. Simply choose your individual files or folders, intervals and time settings for your backups and let the software take care of the rest.



USB Type-C® – Future-proof solution

Be prepared for connectivity of the future.

Most modern devices nowadays come with an USB-C® interface. That's why some of our hard drives include an USB-C® cable, so there's no need to buy an additional adapter. Ready to plug in to future devices out of the box.

Built for performance and reliability

Toshiba is renowned the world over for 50 years of leading innovation – and the power behind its hard drive solutions is no exception. Our enterprise-level developments meet the industry standards with proven reliability. Designed for high capacity and excellent performance, you can be sure that Toshiba's wealth of experience in hard drives is at work in your storage system.

Advanced HDD Technology – FC-MAMR

Toshiba's high capacity HDDs feature Flux Control Microwave Assisted Magnetic Recording (FC-MAMR) Technology – a breakthrough technology that uses microwave energy to ensure more of the write energy is focused into the platter, achieving an increased areal density capability (ADC) of up to 20 %.

Laser sealed helium

The Toshiba HDDs with 12 TB or more use a helium-sealed design, providing the power-efficient capacity and storage density needed by cloud-scale and enterprise storage solution providers to achieve their TCO objectives. Toshiba's laser welding technology ensures that the helium remains securely sealed inside the drive enclosure.

High Reliability

Providing reliability for the ultimate peace of mind, Toshiba HDDs deliver up to 2.5M hours of MTTF, achieving an AFR (Annualized Failure Rate) in 24/7 operation of down to 0.35 % - at a rated workload as high as 550 TB/year.

Industry-leading 10 disk platter design

The Toshiba 20 & 22 TB HDD feature a 10-disk platter design – achieving high storage density levels by stacking the maximum numbers of platters in the industry-leading 3.5" form factor.



Internal Hard Disk Drives

Toshiba offers a broad range of internal hard drives to keep pace with the ever-growing specific requirements of data storage. Choose from a wide range of reliable hard drives that deliver innovative technology and best performance and are tailored to your storage needs. Targeting different application areas such as NAS, Surveillance, Gaming, PC, laptop, and Enterprise storage, Toshiba provides the highest standards to support your personal and business missions.



Everything is possible
– with the right drive.



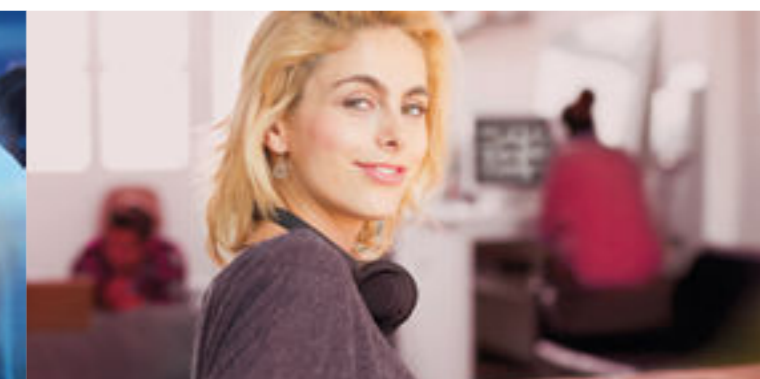
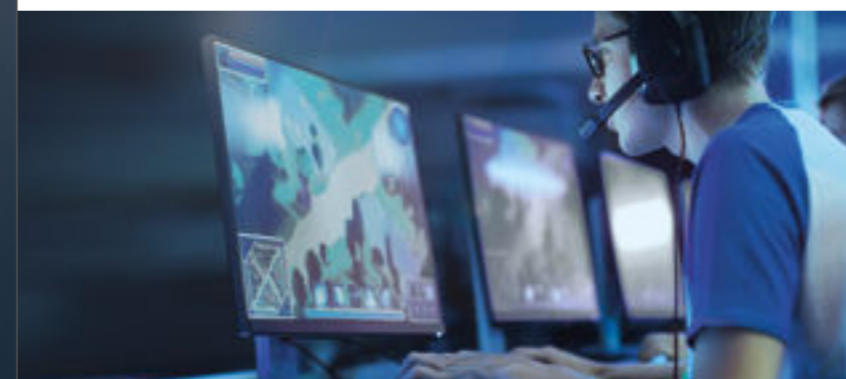
NAS Hard Drives

Offering special reliability for NAS and other high performance storage systems, Toshiba's NAS drives are optimized to meet the reliability, endurance, performance, and scalability requirements of 24/7 high-capacity storage for personal, home office, and small business use.



Surveillance Hard Drives

In a society where 24/7 security is essential and real-time data availability is paramount, intelligent surveillance analysis starts with secure and reliable storage. Toshiba's Surveillance drives offer high reliability and are designed to cope with the concurrent access requirements of CCTV systems.



Performance Hard Drives

Delivering reliable storage, large capacities, and high performance, Toshiba's Performance hard drives are the perfect choice for PC gamers, graphic designers, and professionals with demanding storage requirements.



PC Hard Drives

Boost the storage capacity of your laptop, PC, or game console to help ensure fast, stable file transfer, for smooth and responsive computing. Designed for professionals and everyday users who demand high-performing powerful storage.



Enterprise Hard Drives

Designed for server and storage environments where high data capacity and performance matters, Toshiba's reliable Enterprise drives offer the necessary capacities and performance features required to run business- and mission-critical applications in enterprise, datacenter and cloud environments.



N300

Built for 24/7 reliability



View more



Toshiba's N300
The 3.5-inch internal hard disk offers unprecedented reliability for NAS and other high-performance storage systems. It is optimized to meet the reliability, endurance, performance, and scalability requirements of 24/7 high-capacity storage for personal, home office, and small business use.

- SATA 3.5" SATA Hard Drive
- RPM 7,200 rpm
- 512 MB buffer (18 | 16 | 14 TB)
256 MB buffer (14 | 12 | 10 | 8 | 6 | 4 TB)
- Toshiba Stable Platter Technology
- High reliability and enhanced real-time performance
- High-endurance design
- 3-year warranty

Capacities

18 TB	16 TB	14 TB	12 TB	10 TB
8 TB	6 TB	4 TB		

- Use for:
- NAS and Multimedia Server
 - Desktop RAID and Server
 - Private Cloud Storage
 - Small Business Server and Storage

X300

Level up your drive performance



View more



Toshiba's X300
This 3.5-inch internal hard drive is designed for your professional or gaming PC – delivering reliable, large capacity, incredibly high-performance storage, made possible by a number of advanced features, including an ultra-high 512 MB (14 TB – 18 TB) buffer. It even features improved positional accuracy for stable recording. The X300 is ideal for PC gamers, graphic designers, and other users with demanding storage requirement.

- SATA 3.5" SATA Hard Drive
- RPM 7,200 rpm
- 512 MB buffer (18 | 16 | 14 TB)
256 MB buffer (12 | 10 | 8 | 6 | 4 TB)
- Toshiba Stable Platter Technology
- Toshiba Dynamic Cache Technology

Capacities

18 TB	16 TB	14 TB	12 TB	10 TB
8 TB	6 TB	4 TB		

- Use for:
- Powerful Desktop Workstations
 - All-in-one PCs
 - Gaming computers
 - Home Media computers

S300 Pro

Capture every detail



View more



Toshiba's S300 Pro
The 3.5-inch internal hard disk is designed and tested for 24/7 reliable surveillance, built for speed, capacity, and longer content retention. Capture and analyse every frame from up to 64 video cameras in high resolution with the S300 Pro. Space is important to continually capture a history of video evidence over a period of time. With up to 10 TB, you get the capacity to record and play back the events in real-time in high resolution and with object identification and face recognition.

- SATA 3.5" SATA Hard Drive
- RPM 7,200 rpm
- 256 MB buffer
- Up to 64 cameras
- 24/7 24/7 operation
- 3-year warranty

Capacities

10 TB	8 TB	6 TB
-------	------	------

- Use for:
- Surveillance Digital Video Recorders (sDVR)
 - Surveillance Network Video Recorders (sNVR)
 - Hybrid sDVR (analog and IP)
 - RAID Storage Arrays for Surveillance

S300

Always On, Always Watching



View more



Toshiba's S300
With surveillance systems, nothing but the best is good enough. The Toshiba 3.5-inch S300 is built to meet the highest demands. With support for up to 64 high-resolution surveillance video cameras simultaneously and up to 6 TB capacity, it brings everything into clear view. Each S300 is built with the highest-quality components and has passed rigorous tests to ensure 24/7 reliability and performance. That's Toshiba quality you can trust under the harshest working conditions.

- SATA 3.5" SATA Hard Drive
- RPM 5,400 rpm (6 | 4 | 2 TB)
5,700 rpm (1 TB)
- 256 MB buffer (6 | 4 TB)
128 MB buffer (4 | 2 TB)
64 MB buffer (1 TB)
- Up to 64 cameras
- 24/7 24/7 operation
- 3-year warranty

Capacities

6 TB	4 TB	2 TB	1 TB
------	------	------	------

- Use for:
- Surveillance Digital Video Recorders (sDVR)
 - Surveillance Network Video Recorders (sNVR)
 - Hybrid sDVR (analog and IP)

P300

Performance meets reliability



View more



Toshiba's P300

The 3.5-inch P300 Desktop PC Hard Drive delivers high performance for everyday home or office computing needs. With its two-stage actuator, you can count on smooth, responsive processing power. In addition, your data and media are secured with a loading ramp design to prevent data loss or drive wear and tear. The P300 is available in capacities up to 6 TB.

SATA 3.5" SATA Hard Drive

RPM 5,400 rpm (6 | 4 TB)
7,200 rpm (3 | 2 | 1 TB)

256 MB buffer (2 TB)
128 MB buffer (6 | 4 TB)
64 MB buffer (3 | 1 TB)

Capacities

6 TB 4 TB 3 TB 2 TB 1 TB

Use for:

- Desktop Workstations
- All-in-one PCs
- Desktop PCs
- External enclosures

L200

Take your laptop to the next level



View more



Toshiba's L200

This 2.5-inch internal hard drive is designed for everyday laptop users and gamers – and it's ideal for boosting and upgrading the storage capacity of your laptop PC or games console by up to 2 TB. Perpendicular Magnetic Recording and Tunnel Magneto-Resistive technologies also ensure fast, stable recording that makes the most of your hard drive space.

SATA 2.5" SATA Hard Drive

RPM 5,400 rpm

128 MB buffer (2 TB | 1 TB 7 mm)
8 MB buffer (1 TB 9.5 mm |
500 GB 7 mm | 500 GB 9.5 mm)

Toshiba Dynamic Cache Technology

Capacities

2 TB 1 TB 500 GB

Use for:

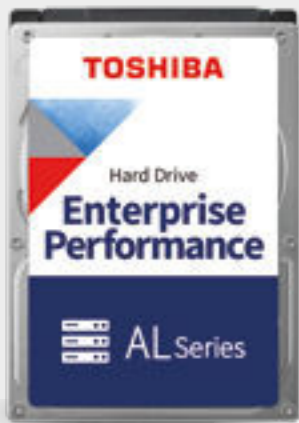
- Notebooks
- Game consoles
- External enclosures

Technical data

Model	Retail Number	Bulk Number	Capacity	Interface	RPM	Cache	Height	Recording Technology	RAID	24/7 Operation	Warranty (years)	
N300 NAS Hard Drive 3.5"												
	–	HDWG51JUZSVA	18 TB	SATA 6 Gbit/s	7,200	512 MB	26.1 mm	CMR	✓	✓	3	
	–	HDWG31GUZSVA	16 TB			512 MB						
	HDWG51EEZSTA	–	14 TB			512 MB						
	–	HDWG21EUZSVA	14 TB			256 MB						
	HDWG21CEZSTA	HDWG21CUZSVA	12 TB			256 MB						
	HDWG11AEZSTA	HDWG11AUZSVA	10 TB			256 MB						
	HDWG480EZSTA	HDWG480UZSVA	8 TB			256 MB						
	HDWG460EZSTA	HDWG460UZSVA	6 TB			256 MB						
HDWG440EZSTA	HDWG440UZSVA	4 TB	256 MB									
X300 Performance Hard Drive 3.5"												
	–	HDWR51JUZSVA	18 TB	SATA 6 Gbit/s	7,200	512 MB	26.1 mm	CMR	–	–	2	
	–	HDWR31GUZSVA	16 TB			512 MB						
	HDWR51EEZSTA	HDWR51EUZSVA	14 TB			512 MB						
	HDWR21CEZSTA	HDWR21CUZSVA	12 TB			256 MB						
	HDWR11AEZSTA	HDWR11AUZSVA	10 TB			256 MB						
	HDWR480EZSTA	HDWR480UZSVA	8 TB			256 MB						
	HDWR460EZSTA	HDWR460UZSVA	6 TB			256 MB						
	HDWR440EZSTA	HDWR440UZSVA	4 TB			256 MB						
S300 Pro Surveillance Hard Drive 3.5"												
	–	HDWT31AUZSVA	10 TB	SATA 6 Gbit/s	7,200	256 MB	26.1 mm	CMR	✓	✓	3	
	–	HDWT380UZSVA	8 TB			256 MB						
	–	HDWT360UZSVA	6 TB			256 MB						
S300 Surveillance Hard Drive 3.5"												
	–	HDWT860UZSVA	6 TB	SATA 6 Gbit/s	5,400	256 MB	26.1 mm	SMR	–	✓	3	
	–	HDWT840UZSVA	4 TB		5,400	256 MB		CMR				
	–	HDWT140UZSVA	4 TB		5,400	128 MB						
	–	HDWT720UZSVA	2 TB		5,400	128 MB						SMR
	–	HDWV110UZSVA	1 TB		5,700	64 MB		CMR				
P300 Desktop PC Hard Drive 3.5"												
	HDWD260EZSTA	HDWD260UZSVA	6TB	SATA 6 Gbit/s	5,400	128 MB	26.1 mm	SMR	–	–	2	
	HDWD240EZSTA	HDWD240UZSVA	4TB		5,400	128 MB		CMR				
	–	HDWD130UZSVA	3TB		7,200	64 MB						
	HDWD320EZSTA	HDWD320UZSVA	2TB		7,200	256 MB						SMR
	HDWD110EZSTA	HDWD110UZSVA	1TB		7,200	64 MB						
L200 Laptop PC Hard Drive 2.5"												
	–	HDWL120UZSVA	2 TB	SATA 6 Gbit/s	5,400	128 MB	9.5 mm	SMR	–	–	2	
	–	HDWL110UZSVA	1 TB			128 MB	7.0 mm					
	–	HDWJ110UZSVA	1 TB	SATA 3 Gbit/s		8 MB	9.5 mm	CMR				
	–	HDWJ105UZSVA	500 GB			8 MB	9.5 mm					
	–	HDWK105UZSVA	500 GB	SATA 6 Gbit/s		8 MB	7.0 mm					

AL Series

Enterprise Performance HDD



View more

Toshiba's AL Series

Toshiba's Enterprise Performance Hard Drive – AL Series delivers high storage densities with rapid data transfer speed, backed up by a 5-year warranty. You can trust the AL Series to deliver day in and day out, 24/7, even in the most demanding high-performance server and storage systems. Especially when traffic is high, the hard drives have the speed needed to perform simultaneous transactions smoothly and efficiently. Additionally, proprietary aprovide the assurance that your data will stay in safe hands.

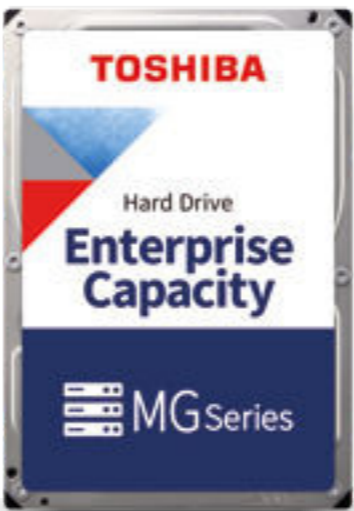
- 2.5" SAS Hard Drive
- 24/7 operation
- Unlimited workload (TB/year)
- MTTF of 2 mill. hours
- Persistent Write Cache Technology
- Flexibility in block size and SIE and SED options
- 5-year warranty

AL Series	AL14SX	AL15SE
Capacity (GB)	300 600 900	300 600 900 1,200 1,800 2,400
I/F speed	SAS 12 Gbit/s	
RPM	15,000	10,500
Cache	128 MB	
MTTF	2.0 mill. hrs.	

- Use for:
- Mission-Critical Enterprise Server and Storage Systems
 - Business Database Server with High Workloads
 - Big Data Analytics
 - Virtualized Storage Systems

MG Series

Enterprise Capacity HDD



View more

Toshiba's MG Series

Toshiba's Enterprise Capacity Hard Drive – MG Series offers formatted capacities as high as 22 TB with interface options including SATA and SAS and delivers 24/7 operation at a workload of 550 TB/year. The MG Series is ideal for enterprise storage array and industrial server and storage systems. It provides the capacity and advanced technologies to meet the special demands of datacenter and cloud-scale infrastructures.

- 3.5" SATA or SAS Hard Drive
- 24/7 operation
- Toshiba Stable Platter Technology
- Persistent Write Cache Technology
- 550 TB/year workload
- Flexibility in block size and SIE and SED options
- 5-year warranty

MG Series	MG04		MG06	MG07	MG08		MG09	MG10
Capacity (TB)	1	2	10	12 14	4	6 8	16	18 20 22
I/F speed	SAS 12 Gbit/s							
	SATA 6 Gbit/s							
RPM	7,200							
Cache	128 MB		256 MB			512 MB		
Sector length	512n	512e, 512n, 4Kn	512e, 4Kn		512e, 512n, 4Kn	512e, 4Kn		512e*
MTTF	1.4 mill. Hrs.		2.5 mill. Hrs.		2 mill. Hrs.		2.5 mill. Hrs.	
Sealed	Air			Helium	Air		Helium	

* Changeable to 4Kn by field-reformatting

Technical data



AL Series
Enterprise
Performance
HDD

Model Number	Specification									Performance		Reliability				
	Form-factor	Fill Gas & Recording	Capacity (GB)	Block Size (Byte)	Spindle Speed (RPM)	Buffer Size (MiByte)	Interface	Security Options		Data Rate (sustained) (MB/s)	Operating Power (W) typ.	MTTF (hrs)	Unrecoverable Error Rate	Duty	Rated Workload (TB/year)	Warranty (years)
HIGHEST PERFORMANCE HDD (15K RPM) FOR SERVERS – BUSINESS DATABASE, ONLINE TRANSACTION, HIGH PERFORMANCE COMPUTING																
AL14SXB30EN	2.5"	Air CMR	300	512n	15,000	128	SAS 12 Gbit/s	SIE/SED		272	9.0	2.0 mill.	1 in 10 ¹⁶	24/7	unlimited	5
AL14SXB60EN			600													
AL14SXB90EN			900													
AL14SXB30EE			300	512e	15,000	128	SAS 12 Gbit/s	SIE/SED		304	9.0	2.0 mill.	1 in 10 ¹⁶	24/7	unlimited	5
AL14SXB60EE			600													
AL14SXB90EE			900													
AL14SXB30EA			300	4Kn	15,000	128	SAS 12 Gbit/s	SIE/SED		304	9.0	2.0 mill.	1 in 10 ¹⁶	24/7	unlimited	5
AL14SXB60EA			600													
AL14SXB90EA	900															
PERFORMANCE HDD (10K RPM) FOR SERVERS AND STORAGE – MISSION CRITICAL BUSINESS DATABASE AND HIGH PERFORMANCE STORAGES																
AL15SEB030N	2.5"	Air CMR	300	512n	10,500	128	SAS 12 Gbit/s	SIE/SED		236	6.5	2.0 mill.	1 in 10 ¹⁶	24/7	unlimited	5
AL15SEB060N			600								7.0					
AL15SEB090N			900								7.0					
AL15SEB120N			1,200								8.1					
AL15SEB06EQ			600	512e	10,500	128	SAS 12 Gbit/s	SIE/SED		273	6.5	2.0 mill.	1 in 10 ¹⁶	24/7	unlimited	5
AL15SEB09EQ			900								7.0					
AL15SEB12EQ			1,200								7.0					
AL15SEB18EQ			1,800								8.1					
AL15SEB24EQ			2,400								8.7					
AL15SEB06EP			600	4Kn	10,500	128	SAS 12 Gbit/s	SIE/SED		273	6.5	2.0 mill.	1 in 10 ¹⁶	24/7	unlimited	5
AL15SEB09EP			900								7.0					
AL15SEB12EP			1,200								7.0					
AL15SEB18EP			1,800								8.1					
AL15SEB24EP			2,400								8.7					

Footnotes

- Definition of capacity: A gigabyte (GB) is 1,000,000,000 bytes and a terabyte (TB) is 1,000,000,000,000 bytes. A computer operating system, however, reports storage capacity using powers of 2 for the definition of 1GB = 2³⁰ bytes = 1,073,741,824 bytes and 1TB = 2⁴⁰ = 1,099,511,627,776 bytes and therefore shows less storage capacity. Available storage capacity (including examples of various media files) will vary based on file size, formatting, settings, software and operating system and/or pre-installed software applications, or media content. Actual formatted capacity may vary.
- A mebibyte (MiB) means 2²⁰, or 1,048,576 bytes.
 - „2.5-inch“ and „3.5-inch“ mean the form factor of HDDs. They do not indicate drive's physical size.
 - Product image may represent a design model.
 - Number of surveillance cameras support capability is defined by performance simulation with High Definition cameras as 2 MiB/s rate.
- A = Advanced Format Sector (4k), E = 512byte Sector Emulated, N = 512byte Sector Native, P = 4Kn Q=512e
 - Toshiba refers to "storage products" as products that can store data, such as HDD.
 - MTTF (Mean Time to Failure) is not a guarantee or estimate of product life; it is a statistical value related to mean failure rates for a large number of products which may not accurately reflect actual operation. Actual operating life of the product may be different from the MTTF. Read and write speed may vary depending on the host device, read and write conditions and file size.
- Images displayed of the N300, X300, S300 Pro, S300, P300 and L200 Internal Hard Drives as well as of the MG and AL Series are for illustration purposes only and do not show the actual products. The images are merely intended to help illustrate the function of the products.
 - SIE = Sanitize Instant Erase, SED = Self Encrypting Drives, FIPS = Federal Information Processing Standard
 - Company names, product names, and service names mentioned herein may be trademarks of their respective registrants and/or owners as well.

Technical data



MG Series

Enterprise Capacity HDD

Model Number	Specification									Performance		Reliability									
	Form-factor	Fill Gas & Recording	Capacity (GB)	Block Size (Byte)	Spindle Speed (RPM)	Buffer Size (MiByte)	Interface	Security Options		Data Rate (sustained) (MB/s)	Operating Power (W) typ.	MTTF (hrs)	Unrecoverable Error Rate	Duty	Rated Workload (TB/year)	Warranty (years)					
ENTERPRISE CAPACITY HDD WITH SAS 12 GBIT/S INTERFACE – BUSINESS CRITICAL STORAGES WITH LARGE CAPACITY																					
MG04SCA20EN	3.5"	Air CMR	2,000	512n	7,200	128	SAS 12 Gbit/s	SIE		204	11.8	1.4 mill.	1 in 10 ¹⁵	24/7	550	5					
MG08SDA400N			4,000			256		SIE/SED		233	8.5	2.0 mill.									
MG04SCA20EE			2,000			128		SIE		215	11.8	1.4 mill.									
MG08SDA400E			4,000			256		SIE/SED		255	8.5	2.0 mill.									
MG08SDA600E			6,000	512e	7,200	256	SAS 12 Gbit/s	SIE/SED		251	9.2	2.0 mill.	1 in 10 ¹⁵	24/7	550	5					
MG08SDA800E			8,000					SIE/SED		260	9.9	2.0 mill.									
MG06SCA10TE			10,000					SIE/SED		249	11.0	2.5 mill.									
MG07SCA12TE			Helium CMR					12,000		SIE/SED	254						7.8				
MG07SCA14TE						14,000		SIE/SED		260	8.4										
MG08SCA16TE						16,000		SIE/SED		275	8.2										
MG09SCA18TE		Helium MAMR	18,000			512		SAS 12 Gbit/s		SIE/SED	281	9.6	2.5 mill.	1 in 10 ¹⁵	24/7	550	5				
MG10SCA20TE			20,000							SIE/SED	281	9.6									
MG10SFA22TE			22,000							SIE/SED	284	10.2									
MG04SCA20EA			Air CMR	2,000	128		SIE			215	11.8	1.4 mill.									
MG08SDA400A		4,000		256	SIE/SED	255	8.5	2.0 mill.													
MG08SDA600A		6,000		256	SIE/SED	251	9.2	2.0 mill.													
MG08SDA800A		8,000			SIE/SED	260	9.9	2.0 mill.													
MG06SCA10TA		10,000			SIE/SED	249	11.0	2.5 mill.													
MG07SCA12TA		Helium CMR	12,000		SIE/SED	254	7.8														
MG07SCA14TA			14,000	SIE/SED	260	8.4															
MG08SCA16TA			16,000	SIE/SED	275	8.2															
MG09SCA18TA		Helium MAMR	18,000	512	SAS 12 Gbit/s	SIE/SED	281	9.2		2.5 mill.											
MG10SCA20TA			20,000			SIE/SED	281	9.6													
ENTERPRISE CAPACITY HDD WITH SATA 6 GBIT/S INTERFACE – MAINSTREAM SERVER AND STORAGE, HYPERSCALE- AND CLOUD STORAGE																					
MG04ACA100N	3.5"	Air CMR	1,000	512n	7,200	128	SATA 6 Gbit/s	SIE		204	11.3	1.4 mill.	1 in 10 ¹⁵	24/7	550	5					
MG04ACA200N			2,000			256		SIE		204	11.3	1.4 mill.									
MG08ADA400N			4,000			256		SIE/SED		233	8.1	2.0 mill.									
MG04ACA200E			2,000			512e		7,200		128	SATA 6 Gbit/s	SIE					184	11.3	1.4 mill.	1 in 10 ¹⁵	24/7
MG08ADA400E			4,000	256	SIE/SED		255			8.1		2.0 mill.									
MG08ADA600E			6,000	256			SIE/SED			251		8.7	2.0 mill.								
MG08ADA800E			8,000				SIE/SED			260		9.5	2.0 mill.								
MG06ACA10TE			10,000				SIE/SED			249		10.6	2.5 mill.								
MG07ACA12TE			Helium CMR				12,000			SIE/SED		254						7.8			
MG07ACA14TE				14,000	SIE/SED		260			8.0											
MG08ACA16TE		16,000		SIE/SED	275		7.7														
MG09ACA18TE		Helium MAMR	18,000	512	SATA 6 Gbit/s		SIE/SED			281		8.3	2.5 mill.	1 in 10 ¹⁵	24/7	550	5				
MG10ACA20TE			20,000			SIE/SED	281	9.3													
MG10AFA22TE			22,000			SIE/SED	284	9.8													
MG04ACA200A			Air CMR			2,000	128	SIE		184	11.3	1.4 mill.									
MG08ADA400A		4,000		256	SIE/SED	255	8.1	2.0 mill.													
MG08ADA600A		6,000		256		SIE/SED	251	8.7		2.0 mill.											
MG08ADA800A		8,000				SIE/SED	260	9.5		2.0 mill.											
MG06ACA10TA		10,000				SIE	249	10.6		2.5 mill.											
MG07ACA12TA		Helium CMR	12,000			SIE	254	7.8													
MG07ACA14TA			14,000	512		SIE	260	8.0													
MG08ACA16TA			16,000			SIE/SED	275	7.7													
MG09ACA18TA		Helium MAMR	18,000			SIE/SED	281	8.3		2.5 mill.											
MG10ACA20TA			20,000			SIE/SED	281	9.3													

TOSHIBA



Toshiba Electronics Europe GmbH
Hansaallee 181
40549 Düsseldorf, Germany

Further information
toshiba-storage.com

Copyright 2023 Toshiba Electronics Europe GmbH. Product specifications are all subject to change without notice. Product design specifications and colours are subject to change without notice and may vary from those shown. One billion bytes, accessible capacity may be less and actual capacity depends on the operating environment and formatting. Errors and omissions excepted. Valid from 10/2023.