



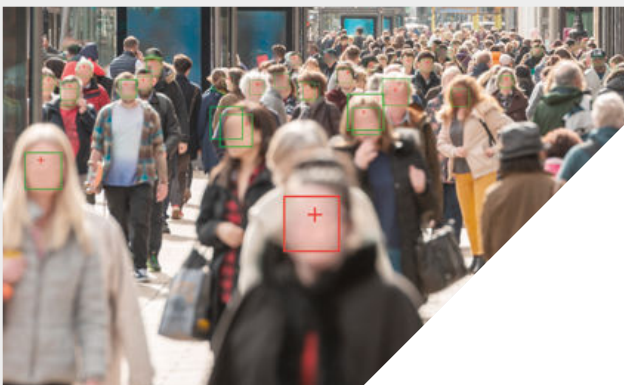
Surveillance in Governmental Buildings and Public Places

“\$9.7 billion being spent by governments on outdoor surveillance in 2021”

Source: Gartner®*

Advanced surveillance equipment will be instrumental in the ongoing fight against both crime and terrorism. Consequently, governments are making it a major part of their national security and border control strategies. Unprecedented quantities of imaging data/video footage are now being generated for these purposes - and this is placing intense demands on digital storage resources.

Governments across the world face numerous threats to their national security and need to do everything possible to safeguard their citizens. According to Gartner, governments will be investing \$9.7 billion in total on outdoor surveillance globally during 2021, and this will rise to \$12 billion in 2022. On average, the number of cameras in operation per thousand urban residents has increased by 25% between 2019 and 2021. Among the cities with the most CCTV cameras now deployed are international capitals like Moscow (Russia) with 170,000, New Delhi (India) with 179,000, London (UK) with 630,000 and Beijing (China) with 1.15 million.



Securing our society – Surveillance cameras act as a powerful deterrent to both violent crime and anti-social behaviour, thereby helping to make the urban environment safer and ensuring social order. As well as human wellbeing, cameras are also of value when it comes to protecting critical infrastructure and government assets from vandalism and other forms of intentional damage (with huge cost savings resulting).

Assisting emergency services – Modern surveillance systems are accelerating the responsiveness of emergency services, meaning that there is a better chance of lives being saved. The arrival of AI technology has brought what can be achieved to a whole new level though, with surveillance systems being far more effective in the tracking of terrorist suspects and the identifying of suspicious behaviour, while at the same time respecting the rights of citizens to retain their privacy.

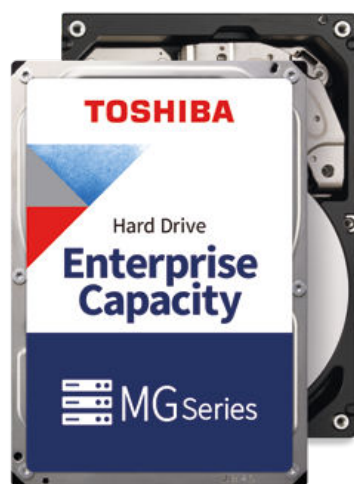
Improving operations – Through increasing use of surveillance, it will be possible to improve monitoring capabilities in government buildings and public places. This will lead to significant efficiency improvements and smoother running day-to-day operations - allowing financial reserves to last longer and better utilisation of strained resources.



HDD Recommendations

The elevated performance and continued operational reliability of Toshiba's HDD data storage technology has made it the preferred choice for the use in governmental buildings and public places when implementing surveillance systems - allowing people counting, object detection and facial recognition work to be undertaken. Toshiba's S300 Pro series offers capacities up to 10 TB, providing

rapid access to the data needed to execute various different AI-related processes. Supplied with a 5-year warranty, the enterprise grade MG series is available in 1 TB to 18 TB capacity versions. These HDDs are designed to handle 550 TB/year workload levels for 24/7 big data analytics.



	MG09	MG08	MG07	MG06	MG04
Capacity	18 16 TB	16 TB	8 6 4 TB	14 12 TB	10 8 6 TB
Form factor	3,5"				
Interface	SATA / SAS				
Workloads	550 TB/year				
Rotational speed (rpm)	7.200 rpm				
24 x 7 operation	Yes				
Buffer	512 MB	256 MB			128 MB
Limited warranty (years)	5				
Use for	<ul style="list-style-type: none">• Centralized Surveillance Data Storage Systems• Archive and Data Recovery Systems• Industrial Server- and Storage Systems• Enterprise Storage Arrays				

S300 Pro		
10 TB	8 TB	6 TB
3,5"		
SATA		
180 TB/year		
7.200 rpm		
Yes		
256 MB		
3		
<ul style="list-style-type: none"> Surveillance Digital Video Recorders (sDVR) Surveillance Network Video Recorders (sNVR) Hybrid sDVR (analog and IP) RAID Storage Arrays for Surveillance 		