

Portable

Canvio Premium (2016)

A better class of storage



3 2 1
TB TB TB

Color ● ●

The Canvio Premium offers superiority in form and function. Its smooth, high quality aluminium design with diamond-cut edges makes it stand out from the crowd, while highly-specified features make it easier than ever to store and protect your files. Its sleek style makes it look at home sitting next to everything from notebooks to high-end desktop PCs, and with the supplied Type-A to Type-C USB adapter, more of those connections are possible.



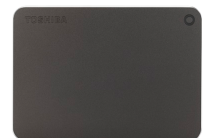
- 2.5" 2.5" external hard drive
- High quality aluminium design with diamond-cut edges
- SuperSpeed USB 3.0 port
- USB-powered
- Type-C adapter (Type-A to -C)
- Backup software
- Password lock
- NTFS driver for Mac® included
- Soft pouch
- 3-year warranty

Manual

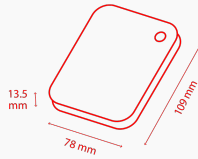
[Canvio-Premium_UM_P2_202004.pdf](#)

Tools

[TOSHIBA_Storage_Diagnostic_Tool.zip](#)



Product Specifications



Basic Specifications

Interface	USB 3.0 (USB 2.0 compatible)
Max. transfer rate	~ 5.0 Gbit/s
File system	NTFS (MS Windows)
Power	USB bus power (max. 900mA)
System requirements	Formatted NTFS for Microsoft® Windows® 10, Windows® 8.1, Windows® 7; macOS 10.12+, OS X 10.11, 10.10, 10.9, 10.8 with included NTFS driver for Mac®; one free port of USB 3.0 or USB 2.0
Certifications	Formatted NTFS for Microsoft® Windows® 10, Windows® 8.1, Windows® 7; macOS 10.12+, OS X 10.11, 10.10, 10.9, 10.8 with included NTFS driver for Mac®; one free port of USB 3.0 or USB 2.0

Box Content

Box Content	Canvio Premium USB 3.0 micro-B cable Type-C adapter (Type-A to -C) Soft pouch Pre-loaded software Quick Start Guide User's manual (pre-installed on the hard drive)
--------------------	---------------------------------------------------------------------------------------------------------------------------------------------------------------------------------------

Physical

Weight (approx.)	1 TB: 165 g 2 TB, 3 TB: 230 g
Dimensions	1 TB: 109 × 78 × 13.5 mm 2 TB, 3 TB: 109 × 78 × 19 mm
Enclosure	Aluminium

Features

Mac NTFS compatibility driver	Tuxera NTFS for Mac
Password lock software	Toshiba Password Lock
Backup Software	NTI® Backup Now EZ™

Product Range

Part number	Capacity	Color
HDTW130EB3CA	3 TB	Dark grey metallic
HDTW130EC3CA	3 TB	Silver metallic
HDTW120EB3CA	2 TB	Dark grey metallic
HDTW120EC3CA	2 TB	Silver metallic
HDTW110EB3AA	1 TB	Dark grey metallic
HDTW110EC3AA	1 TB	Silver metallic

Contact

Toshiba Electronics Europe GmbH

Hansaallee 181
40549 Düsseldorf
Germany