

Portable

Canvio Connect II

Capacity to connect




3 2.5 2 1 500
TB TB TB TB GB

Color     

The Canvio Connect II is a smart storage solution that will soon become your favourite data companion. Not only do you get up to 3 TB of portable storage, backing up your files also is a breeze, thanks to the pre-installed NTI® Backup Now EZ™ software. An NTFS driver for Mac® is included as well so you can use the Canvio Connect II on both Windows PC and Apple Macintosh platforms. And all this is packed into a solid, stylish enclosure – available in five colours – that fits in the palm of your hand.



 2.5" external hard drive

 Glossy piano finish available in 5 colours

 SuperSpeed USB 3.0 port

 USB-powered


 Backup software

 NTFS driver for Mac® included

Manual

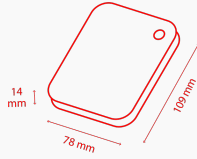
[UM_Canvio_Connect_II.pdf](#) 

Tools

[TOSHIBA_Storage_Diagnostic_Tool.zip](#) 



Product Specifications



Basic Specifications

Interface	USB 3.0 (USB 2.0 compatible)
Max. transfer rate	~ 5.0 Gbit/s
File system	NTFS (MS Windows) *The drive can be re-formatted to HFS+ file system for full Mac® compatibility.
Power	USB bus power (max. 900mA)
System requirements	Windows 10 / Windows 8.1 / Windows® 7; Apple® macOS 10.12+, OS X 10.11, 10.10, 10.9, 10.8, Mac OS X 10.7, 10.6.6 - 10.6.8; CPU with 750 MHz or faster, 10 MB system hard disk space, 256 MB system memory, one free port of USB 3.0 or USB 2.0

Box Content

Box Content	Canvio Connect II NTI® Backup Now EZ™ software (pre-loaded) Tuxera NTFS for Mac® driver software (pre-loaded) USB 3.0 micro-B cable Quick Start Guide User's manual (pre-installed on the hard drive) Warranty leaflet
--------------------	--

Physical

Weight (approx.)	500 GB, 1 TB: 165 g 2 TB, 2.5 TB, 3 TB: 230 g
Dimensions	500 GB, 1 TB: 78 × 109 × 14mm 2 TB, 2.5 TB, 3 TB: 78 × 109 × 19.5 mm
Enclosure	Glossy piano finish

Features

Mac NTFS compatibility driver	Tuxera NTFS for Mac®
--------------------------------------	----------------------

Product Range

Part number	Capacity	Color
HDTC830EL3CA	3 TB	Blue
HDTC830EK3CA	3 TB	Black
HDTC830EW3CA	3 TB	White
HDTC830EC3CA	3 TB	Satin Gold
HDTC830ER3CA	3 TB	Red
HDTC825EL3CA	2.5 TB	Blue
HDTC825EC3CA	2.5 TB	Satin Gold
HDTC825EW3CA	2.5 TB	White
HDTC825EK3CA	2.5 TB	Black
HDTC825ER3CA	2.5 TB	Red
HDTC820EL3CA	2 TB	Blue
HDTC820EK3CA	2 TB	Black
HDTC820EW3CA	2 TB	White
HDTC820ER3CA	2 TB	Red
HDTC820EC3CA	2 TB	Satin Gold
HDTC810EW3AA	1 TB	White
HDTC810EL3AA	1 TB	Blue
HDTC810EK3AA	1 TB	Black
HDTC810EC3AA	1 TB	Satin Gold
HDTC810ER3AA	1 TB	Red
HDTC805EK3AA	500 GB	Black
HDTC805EW3AA	500 GB	White
HDTC805EC3AA	500 GB	Satin Gold
HDTC805ER3AA	500 GB	Red
HDTC805EL3AA	500 GB	Blue

Contact

Toshiba Electronics Europe GmbH

Hansaallee 181
40549 Düsseldorf
Germany